

# 铝镁合金压铸模具研发制造专家

Professional Manufacturer of Die Casting Moulds and Die Casting Parts

— 诚信 · 专注 · 创新 · 客户成功 —



我们的愿景

**产业链核心地位的科技企业**

A Technology Enterprise at the Core of the Industry Chain

我们的使命

**通过创新驱动的制造能力，贡献企业的长期价值**

Contribute to Long-term Corporate Value Through Innovation-driven Manufacturing Capabilities

核心价值观

**诚信 专注 创新 客户成功**

Integrity Focus Innovation Customer Success

# 荣誉及资质

## HONOR&AWARD

- 获得 IATF16949:2016 质量管理体系认证
- 获得“国家高新技术企业”荣誉
- 获得“国家科技型中小企业”荣誉
- 获得“浙江省创新型中小企业”荣誉
- 获得“宁波市企业管理创新提升三星级企业”
- 获得“北仑区三星级绿色工厂”荣誉
- 获得“上海汽车变速器有限公司压铸件模具供应商”
- 获得“Flow Science 永久许可证授权”
- 获得“宁波市北仑区（开发区）企业工程技术中心”
- 获得 ISO 14001:2015 环境管理体系标准认证
- IATF16949:2016 Quality Management System Certification
- National High-tech Enterprise
- National Science and Technology-based Small and Medium-sized Enterprises
- Innovative Small and Medium-sized Enterprises in Zhejiang Province
- Ningbo Enterprise Management Innovation and Promotion Three-Star Enterprise
- Three-star Green Factory in Beilun District
- Die casting mold supplier for Shanghai Automotive Transmission Co."
- Flow Science Perpetual License Authorization"
- Enterprise engineering Technology Center, Beilun District (Development Zone), Ningbo
- ISO 14001:2015 Environmental Management System Certification





# 关于我们

## CORPORATE INTRODUCTION

WBF 宁波万博丰模具  
NINGBO WANBOFENG MOULD

宁波万博丰模具机械有限公司成立于 2006 年 12 月，是专业从事铝镁合金压铸模具全流程研发与制造的国家级高新技术企业。

形成了模具、压铸、精加工一体化的服务矩阵，基于客户成功的服务体系得到了 100+ 行业领先客户的认可。

压铸模具及产品件的主要应用领域涵盖了新能源汽车变速系统、传动系统、电池系统、悬挂系统等核心系统，以及各类电子电器和通讯件等。

我们位于中国压铸模具产业基地、全国压铸模具标准化示范基地——宁波北仑灵峰现代产业园。

公司整体占地面积 8000 平方米，厂房建筑面积 9500 平方米，目前拥有高素质专业工程师 100 余人；

公司现有设备包括 CNC 加工中心，高精度数控车床、光谱分析仪和探伤仪、抛丸机、电火花、中走丝线切割、试模用压铸机、合模机及高速铣等专用设备 140+ 台，还有爱德华、蔡司三坐标测量仪和其他精密计量仪器。公司配备了国际先进的 Flow-3D Cast 模流分析软件，及 CAD/CAM/CAE 等各类二维、三维设计软件，确保每一个项目的效率与质量。

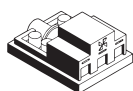
万博丰已通过 IATF16949:2016 质量体系认证，建立了完备的质量体系架构，并不断迭代与改善。客户和供应商之间的所有活动中都采用了质量第一的理念。我们期待达到并超越您所有的质量期望。通过全面的一站式专业解决方案，从产品构思、模具设计制造、优化生产至付运，我们均能为客户提供具有高附加值的优质产品服务，并达到顾客满意为最终目标。

1160



注册资本：1160 万元  
Registered capital: 11.6 million yuan

20+



深耕压铸行业：20+ 年  
Deep plowing die-casting industry: 20+ years

19+



自主专利技术：19+ 项  
Independent patent technology: 19+ items

> 5%



研发投入：年销售额 5% 以上并持续增长  
R&D investment: more than 5% of annual sales and continue to grow





Established in December 2006, Ningbo WBF(WanBoFeng) Mould & Machinery Co., Ltd. is a national high-tech enterprise specializing in the research, development and manufacturing of aluminum and magnesium alloy die casting molds, Setting up the whole process.

We have formed an integrated service matrix of mold, die-casting and finishing, and our service system based on customer success has been recognized by 100+ industry-leading customers.

The main application areas of die-casting molds and product parts cover the core systems of new energy vehicles such as transmission system, transmission system, battery system, suspension system, and all kinds of electronic appliances and communication parts.

We are located in China die casting mold industry base, national die casting mold standardization demonstration base - Ningbo Beilun Lingfeng Modern Industrial Park.

The company as a whole covers an area of 8,000 square meters, plant construction area of 9,500 square meters, currently has more than 100 highly qualified professional engineers;

The company's existing equipment includes die-casting machines, CNC machining centers, high-precision CNC lathes, spectral analyzers and flaw detectors, shot blasting machines, EDM, medium wire cutting, clamping machines and high-speed milling and other special equipment 140 + sets, as well as Eduard, ZEISS three-coordinate measuring machine and other precision measuring instruments. The company is equipped with international advanced Flow-3D Cast mold flow analysis software, and CAD/CAM/CAE and other kinds of 2D and 3D design software to ensure the efficiency and quality of each project.

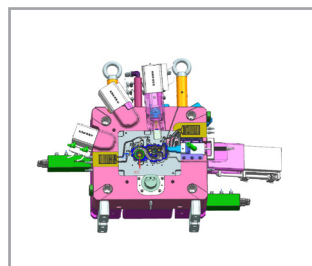
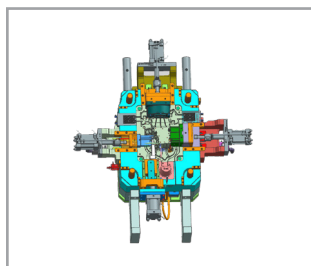
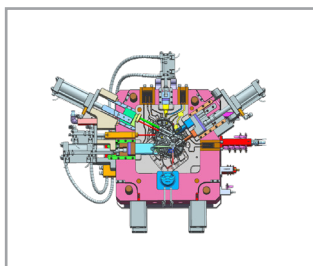
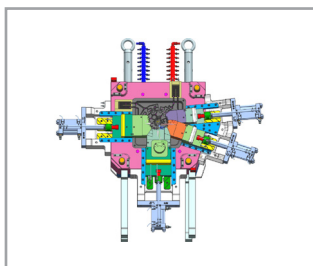
WBF has passed the IATF16949:2016 quality system certification, and has established a complete quality system structure with continuous iteration and improvement. A quality first philosophy has been adopted in all activities between customers and suppliers. We look forward to meeting and exceeding all your quality expectations. Through comprehensive one-stop professional solutions, from product conception, mold design and manufacturing, optimization of production to shipment, we are able to provide our customers with high value-added quality products and services, and achieve customer satisfaction as the ultimate goal.

# 压铸模具技术与研发

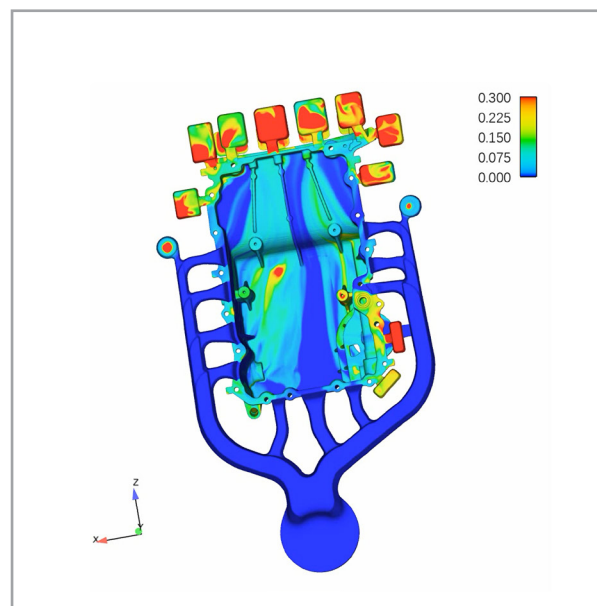
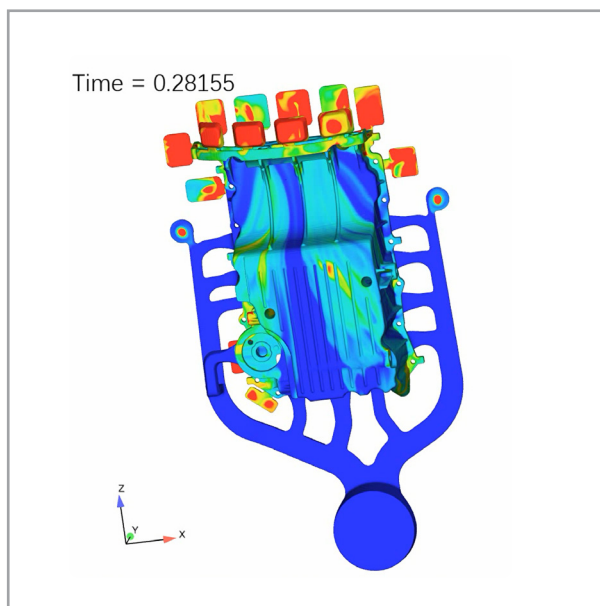
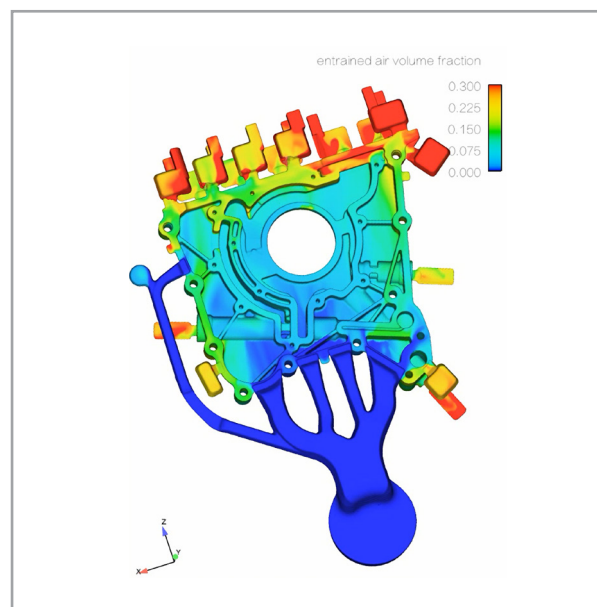
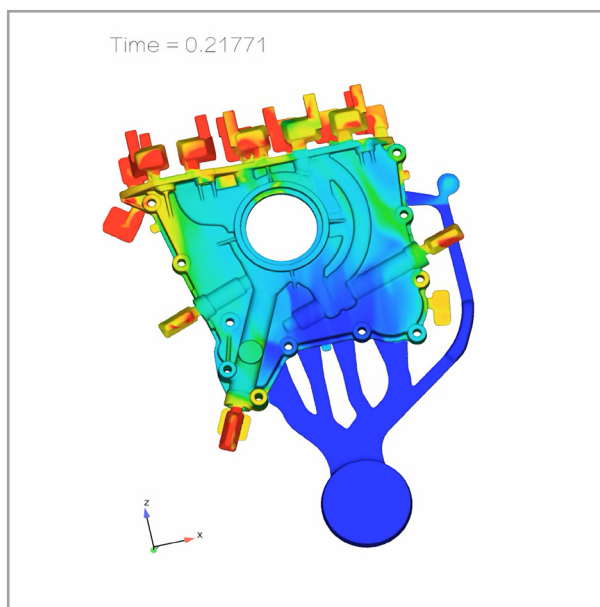
## R&D CAPABILITIES FOR DIE CASTING MOLDS

万博丰专注于压铸模具的生产技术和开发研究。20 余年的积累，培养与聚集了一批技术精湛、经验丰富的高级模具工程师团队，形成了齐全的模具开发管理流程及质量管理体系，经过多年的研发和技术积累，形成了一系列核心技术，致力于为客户提供专业化的压铸模具开发及制造。

WBF focuses on the production technology of Die-Casting molds and development research. more than 20 years of accumulation, training and gathering a number of skilled and experienced team of senior mold engineers, the formation of a full range of mold development management process and quality management system, after years of research and development and technology accumulation, the formation of a series of core technologies, is committed to providing customers with specialized die-casting mold development and manufacturing.







模具设计与研发人员：30+ 位资深压铸模具工程师

模具开发职能：开模项目资料对接、以客户需求为导向开展工程设计、CAE 分析、模流分析、模具结构设计与优化等

模流仿真与分析：配备 USA FLOW-3D V5.1 正版模流分析软件（80 核运行），模流分析效率超过普通模流分析软件 5 倍以上

Mold design and R&D staff: 30+ senior die-casting mold engineers

Mould development function: Pre-project information docking, Customer demand-oriented engineering design, CAE analysis, Mold flow analysis, Mold structure design and optimization, etc.

Mold flow simulation and analysis: Equipped with USA FLOW-3D V5.1 genuine mold flow analysis software (80 cores operation, more than 20 TFLOPS theoretical arithmetic), the efficiency of mold flow analysis is more than 5 times than the ordinary mold flow analysis software.



# 技术创新

## TECHNOLOGICAL INNOVATION

### 工业软件

#### Industrial software

重视技术创新，始终围绕客户产品合格率、生产稳定性、生产节拍、维保便利性，持续改进

Emphasize technological innovation, always focus on customer product qualification rate, production stability, production pace, and maintenance convenience, and continuously improve

#### CAE

MAGMA  
Flow-3d



#### CAE

CATIA V5 2019/V6  
NX 8.0/12.0  
Pro/E 6.0



#### CAM

TEBIS V4.0  
Power Mill 7

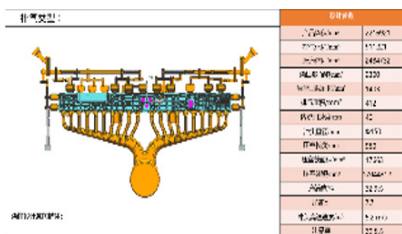


### CAE& 工艺设计

#### CAE & Process Design

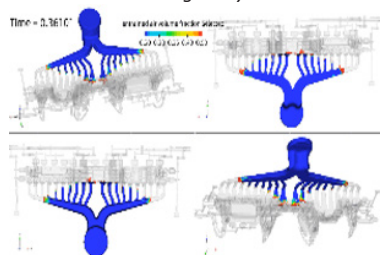
#### ① 基本信息分析

Basic Information Analysis



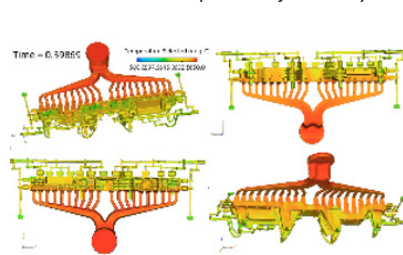
#### ② 充型分析

Filling analysis



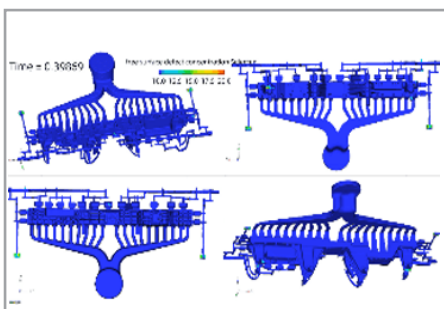
#### ③ 温度场分析

Temperature field analysis



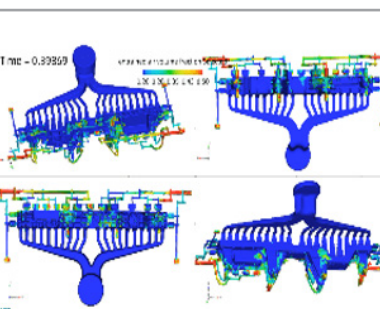
#### ⑥ 含气量分析

Gas content analysis



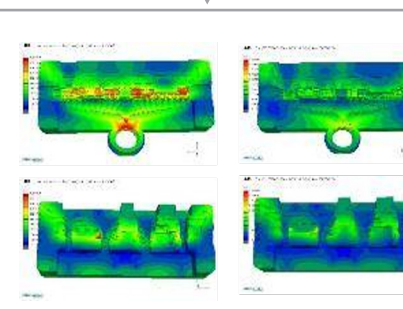
#### ⑤ 氧化分析

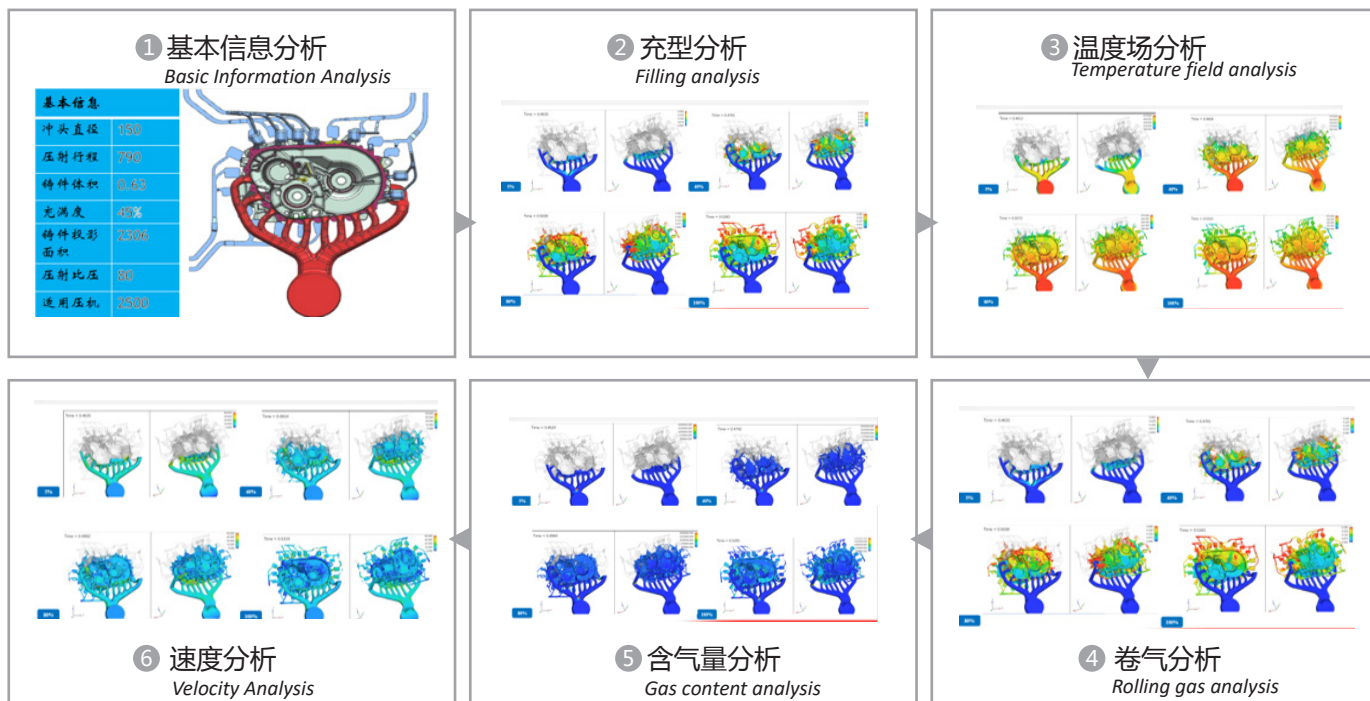
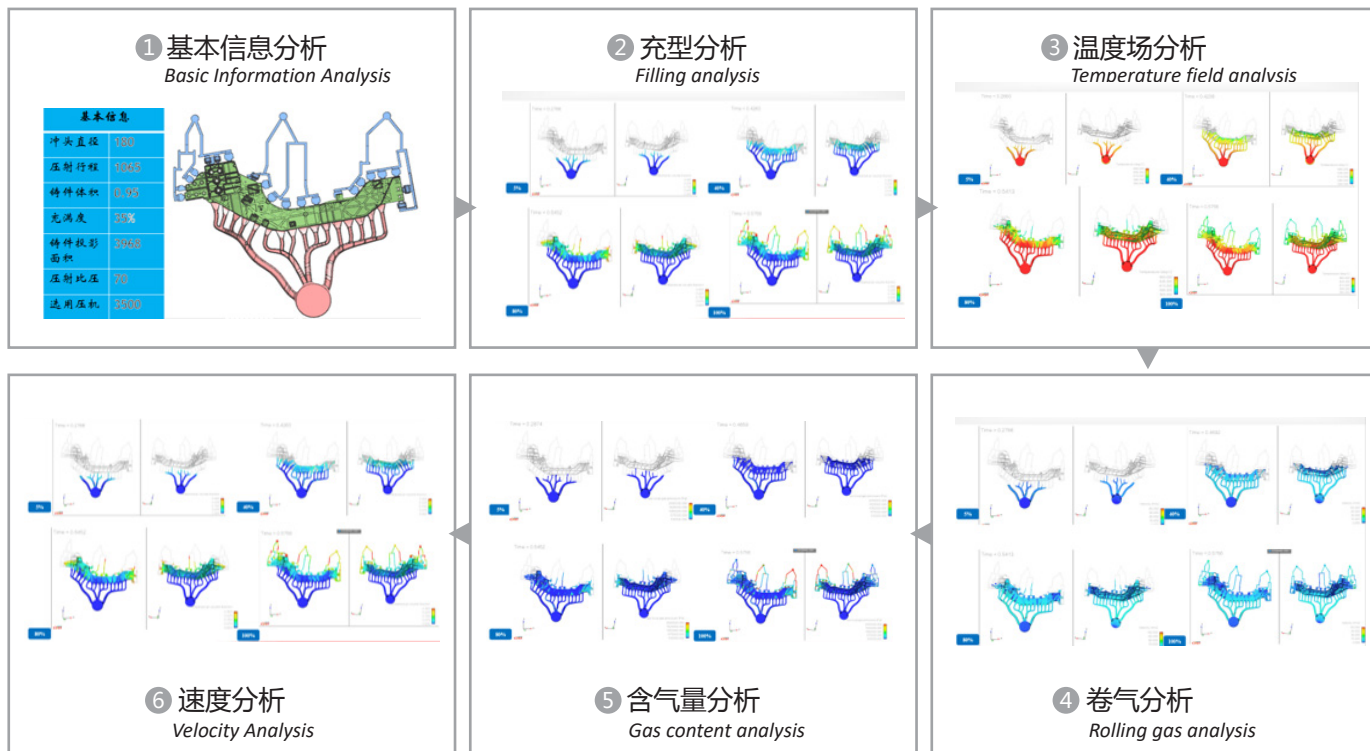
Oxidation analysis



#### ④ 温度场分析

Temperature field analysis

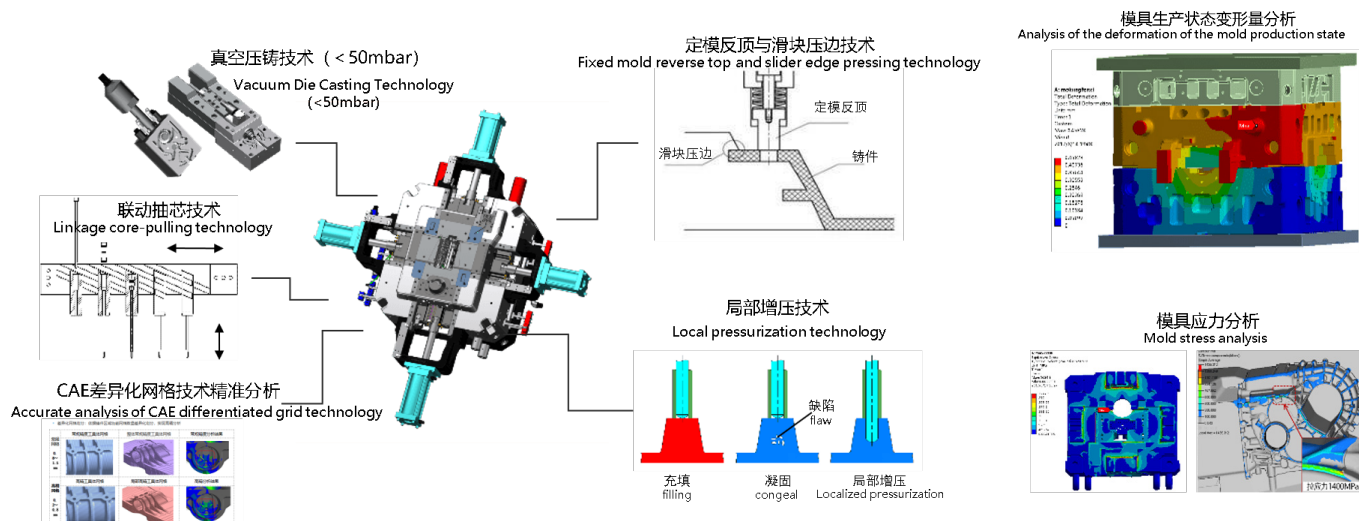




CAE 分析控制零件成型过程填充、收缩、冷却、速度、模具温度等变差，实现产品在生产过程高质量、短节拍

CAE analysis controls the filling, shrinkage, cooling, speed, mold temperature, and other variations during the part forming process, achieving high-quality, short section production of the product

## 创新技术 Innovative technology



重视创新，拥有模具结构、工装类专利 30 余项；

Attaching importance to innovation, it has more than 30 patents for mold structure and tooling;

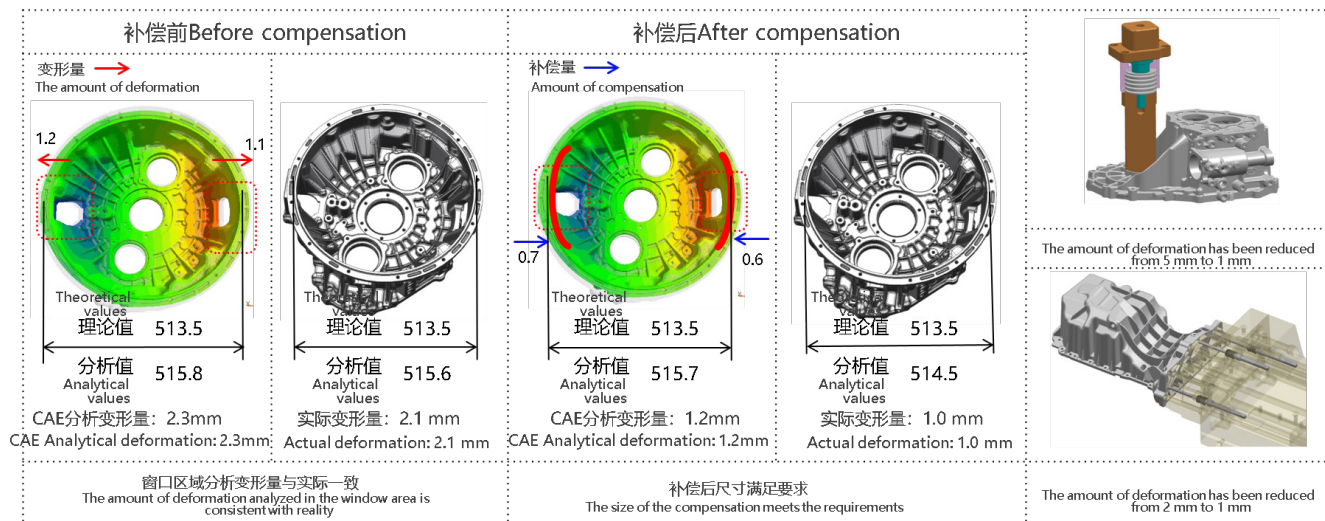
**关注客户质效提升：**CAE 分析控制零件成型过程填充、收缩、速度、模具温度等要素，实现产品高质量、短节拍生产；应用真空压铸、局部增压、反顶、联动抽芯等技术，提高产品合格率；分析模具生产过程变形及应力分布，预防开裂及飞边问题；

**Focus on customer quality and efficiency improvement:** CAE analysis controls the filling, shrinkage, speed, mold temperature and other elements in the molding process of the part to achieve high-quality and short-beat production; The application of vacuum die-casting, local pressurization, reverse topping, linkage core pulling and other technologies to improve the product qualification rate; Analyze the deformation and stress distribution in the mold production process to prevent cracking and flashing;

## 模具研发设计技术——铸件尺寸精度保证

### Mold R&D and Design Technology - Ensuring Dimensional Accuracy of Castings

#### 预变形补偿工艺 / Pre-deformation compensation process



分析铸件翘曲趋势及幅度，实施预先变形补偿，铸件冷却收缩后与理论状态吻合，保证压铸件尺寸精度

Analyze the warpage trend and amplitude of the workpiece, implement the pre-deformation compensation, and the workpiece is consistent with the theoretical state after cooling and shrinkage, so as to ensure the dimensional accuracy of the die-casting part

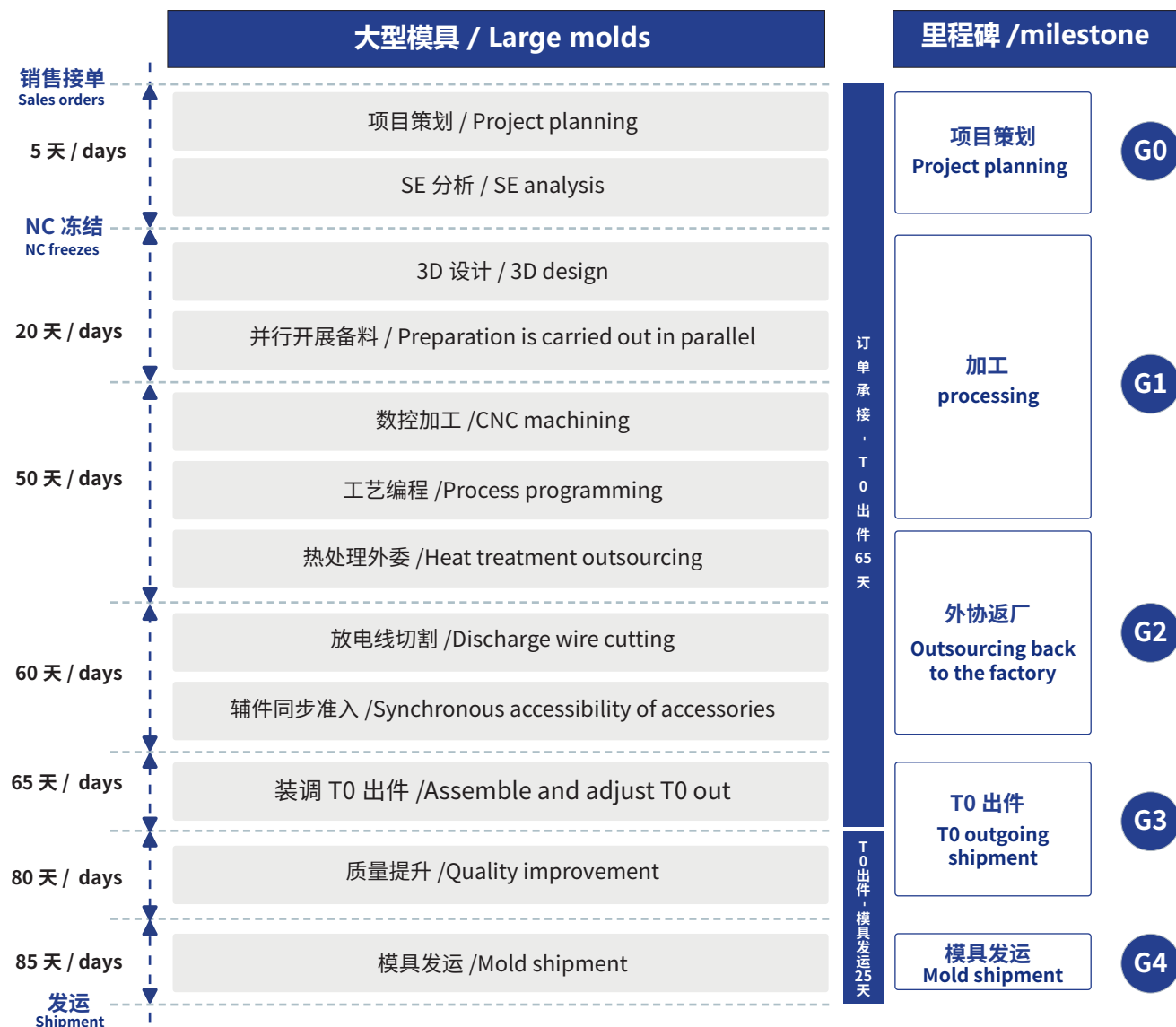


# 项目管理

## PROJECT MANAGEMENT

### 大型模具日程流程管理

### Large scale mold schedule process management



#### 并行工程

#### Concurrent engineering

统筹策划项目特性及项目并行，以 SE 为工具实现产品各环节同步策划

Coordinate the planning of project characteristics and project parallelism, and use SE as a tool to realize the synchronous planning of all aspects of the product

#### 关键路径支撑

#### Critical path support

识别顾客关键里程碑要求，细分日计划，智能化精准排产，实现无等待日程运行，确保周期可控

Identify key milestone requirements of customers, subdivide daily plans, intelligently and accurately schedule production, realize no-waiting schedule operation, and ensure that the cycle is controllable

#### 生产效率

#### Productivity

以生产技术为核心，优化制造工艺路线，设备精度持续保证，提高模具精度，减少研合周期工时

With production technology as the core, optimize the manufacturing process route, continuously ensure the accuracy of equipment, improve the accuracy of molds, and reduce the working hours of the R&D cycle

# 专业生产能力

## PROFESSIONAL PRODUCTION CAPACITY

生产设备清单 List of production equipment

序号	设备名称 Equipment name	品牌 Brand	规格 / 型号 Specification/model	产地 Place of Origin	现有数量 Quantity on hand
1	兄弟立式加工中心 Brother vertical machining center	BROTHER	最大主轴回转 10000min <sup>-1</sup> (Maximum spindle rotation )	日本 Japan	4 台 sets
2	艾格玛数控龙门铣床 Egma CNC gantry milling machine	艾格玛 Egma	1600*1300*600mm	中国 China	2 台 sets
3	四轴卧式加工中心 Four axis horizontal machining center	艾格玛 Egma	1200*900*700mm	中国 China	2 台 sets
4	津研大型数控加工中心 Jinyan Large CNC Machining Center	KOMATECH	700*420*300mm	韩国 R.O.K.	6 台 sets
5	新虎牌高速加工中心 New Tiger High Speed Machining Center	新虎将 gentiger	1200*750*650mm	中国 China	3 台 sets
6	海天龙门立式加工中心 Haitian Longmen Vertical Machining Center	海天精工 Haitian Seiko	2000*1500*700mm	中国 China	3 台 sets
7	重型立式加工中心 Heavy duty vertical machining center	沈阳机床 / 尚银 Shenyang Machine Tool/ Shangyin	1500*800*600mm	中国 China	21 台 sets
8	三轴数控深孔钻床 Three axis CNC deep hole drilling machine	精准汇贤 Precise Huixian	1350*1000*1300mm	中国 China	2 台 sets
9	数控电火花成型机床 CNC EDM forming machine	欧米隆 Omiron	1000*550*400mm	中国 China	6 台 sets
10	高精五轴数控中走丝 High precision five axis CNC wire walking	苏州汉奇 Suzhou Hanqi	HQ-1000F3	中国 China	11 台 sets
11	数控机床 / 钻床 / 磨床等 CNC machine tools/drilling machines/ grinding machines, etc	腾丰数控 / 海德曼等 Tengfeng CNC/ Heidmann, etc	HCL300A	中国 China	32 台 sets
12	双工位吊挂式抛丸机 Double station hanging shot blasting machine	峰盛环保 Fengsheng Environmental Protection	FSQ3740-Y1	中国 China	2 台 sets
13	合模机 Clamping machine	顺兴精工等 Shunxing Seiko	500T 和 300T	中国 China	3 台 sets
14	行车 Driving	河南卫华 Henan Weihua	20T	中国 China	15 台 sets



生产装配车间 ▲  
Assembly Hall



模具制造车间 ▲  
Mold Manufacturing Hall





线切割车间 ▲

Electric discharge machines(EDM)



电脉冲车间 ▲

Electrical Pulse Workshop



电脉冲车间 ▲

Electrical Pulse Workshop



中走丝 ▲

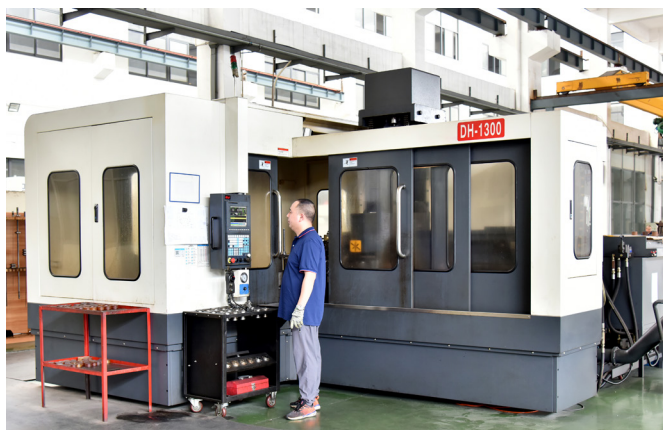
Medium Walking Wire



数控车床 ▲

CNC Lathe





**深孔钻 ▲**  
Deep Hole Drilling



**深孔钻 ▲**  
Deep Hole Drilling



**500T 合模机 ▲**  
500T Mold Fitting Machine



**300T 合模机 ▲**  
300T Mold Fitting Machine



**生产部 ▲**  
Production Department

# 试模验证车间

## MOLD VERIFICATION WORKSHOP

万博丰模具配备有试模用冷室压铸机 7 台：800T、500T、400T、300T/2 台、280T/2 台，可调配 6000T 级以下压铸机验证  
每台压铸机配备自动给汤机，喷雾机，取件机，真空机、水冷油冷系统模拟自动化生产。

公司配备拉力测试机、X 光探伤仪、光谱分析仪、扫描仪、蔡司三坐标测量仪等尖端检测设备。

模具试模完成后可以向客户提供：材质成分检测报告、产品全尺寸报告等各种检测报告。

Wanbofeng is equipped with 7 sets of cold chamber die-casting machines: 800T, 500T, 400T, 300T/2 sets, 280T/2 sets.

Each die-casting machine is equipped with automatic soup feeder, spray machine, pick-up machine, vacuum machine, water-cooled oil-cooled system to realize automatic production.

The company is equipped with tensile testing machine, X-ray flaw detector, spectrum analyzer, scanner, Zeiss coordinate measuring machine and other cutting-edge testing equipment.

After the completion of production, we can provide customers with: material composition test report, product full-size report and other test reports. At the same time, the die-casting machine below 6000T can be outsourced







客户产品展览室 ▲

Customer product exhibition room

# 质量检测与品质管控

## QUALITY INSPECTION & CONTROL



万博丰坚持用质量至上践行客户第一。质量检测中心配备了德国蔡司 (Zeiss) 三坐标机 (CMM)、新爱德华 (AEH) 三坐标机, 斯派克 (SPECTRO) 光谱仪、中讯科技探光仪、SIMSCAN 三维激光扫描仪、英士特粗糙度轮廓度仪一体机等先进检测仪器设备, 严格按照质量管理体系和客户的要求对原材料来料、生产过程、出货等各个环节及试验装备进行全程全生命周期的质量管控。

WBF insists on practicing CUSTOMER FIRST with QUALITY FIRST. The quality inspection center is equipped with Germany Zeiss Three coordinate measuring machine (CMM), New Edward (AEH) CMM, SPECTRO spectrometer, Sino-Xun Technology light detector, SIMSCAN three-dimensional laser scanner, Roughness and Profile Gauge Integrated Machine and other advanced testing instruments and equipment, in strict accordance with the quality system and customer requirements of raw materials, production process, shipment of each link and test equipment We carry out the whole process of quality control.

品质检验设备清单 List of quality inspection equipment

序号	设备名称 Equipment name	型号 Model	制造商 Manufacturer	数量 Qty	行程 / 规格	精度	最大承重
1	卡尔蔡司 CMM Carl Zeiss CMM	SPECTRUM7/7/6	Carl Zeiss AG	1 台 set	700*700*600mm	2μm	1200KG
2	新爱德华 CMM New Edward CMM	Daisy8106/A15186	Germany AEH	1 台 set	800*1000*600mm	3μm	1500KG
3	新爱德华 CMM New Edward CMM	MQ686/A07249	Germany AEH	1 台 set	600*800*600mm	4μm	1200KG
4	中讯探伤仪 Zhongxun flaw detector	ZXFlasee L	ZXFlasee L	1 台 set	600*600*600mm 50kg MAX	-	-
5	便携式三维扫描仪 Portable 3D scanner	SIMSCAN22	SCANTECH	1 台 set	精度 (Accuracy) : 0.035mm	-	-
6	馨标万能试验机 Xinbiao universal testing machine	XBD5105	上海馨标 Shanghai Xinbiao	1 台 set	100KN	-	-
7	斯派克直读光谱仪 Spike direct reading spectrometer	SPECTRO	斯派克 Spike	1 台 set	-	-	-
8	粗糙度轮廓度仪 Roughness and Profile Gauge	SPMI-200D	英士特 Integrated Machine	1 台 set	-	-	-





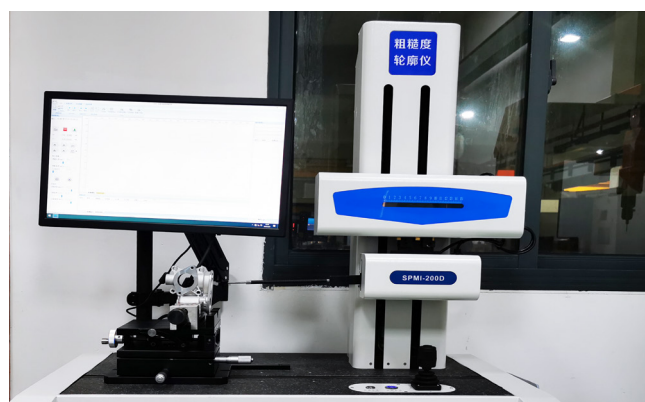
质量检验室 ▲

Quality Inspection Laboratory



三坐标检验 ▲

Coordinate Measuring Machine (CMM)



粗糙度轮廓度仪 ▲

Inspection roughness And Profile Gauge



探伤仪 ▲

Non-Destructive Testing (Ndt) Instrument



万能试验机 ▲

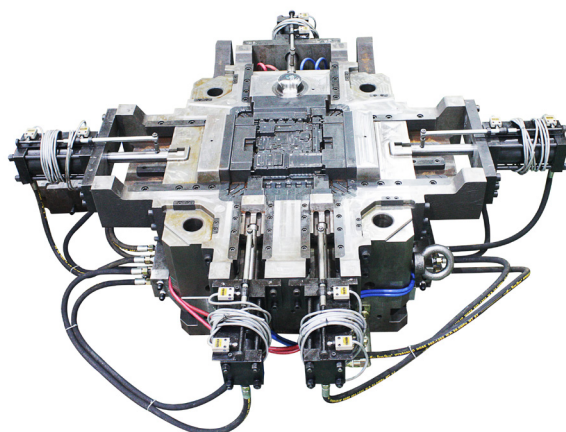
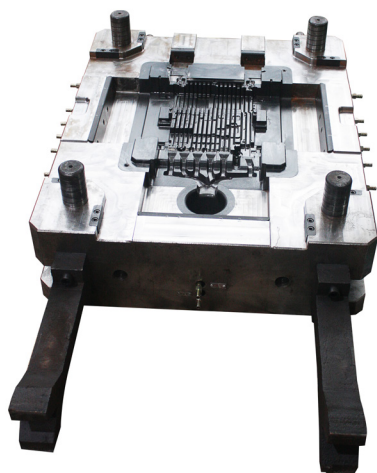
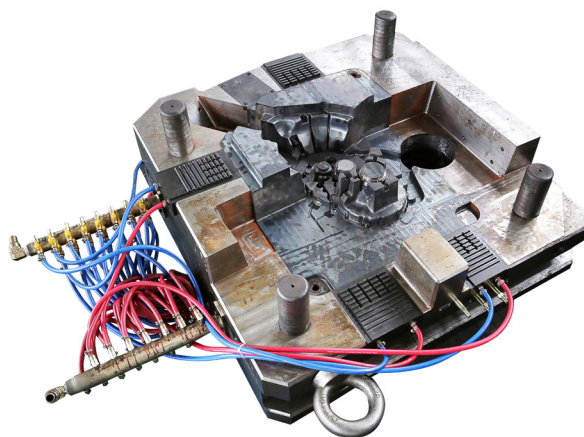
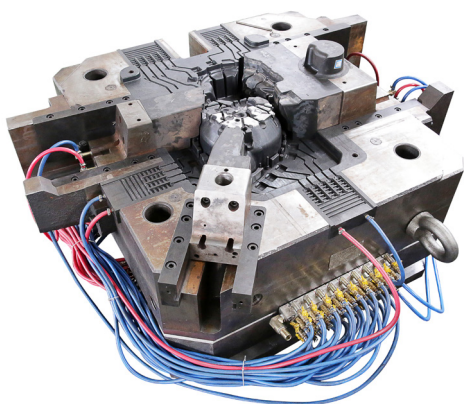
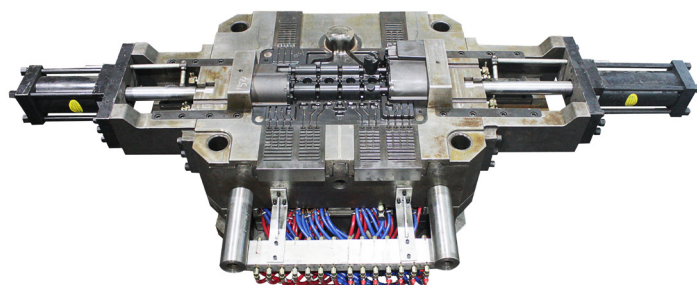
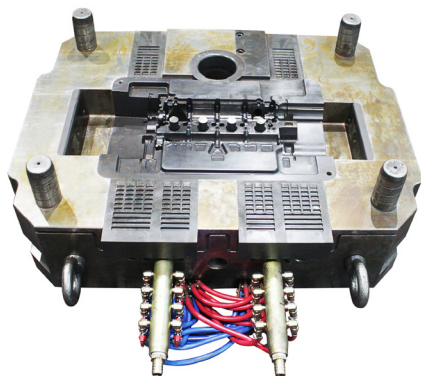
Universal Testing Machine



# 模具展示

## DIE CASTING MOULD

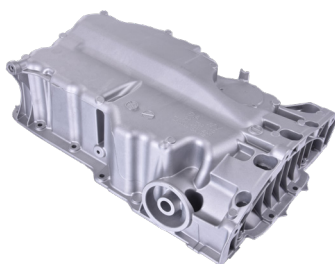
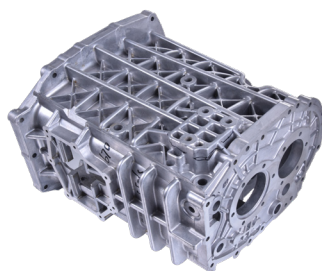
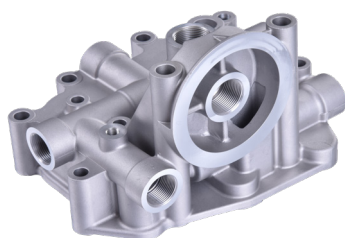
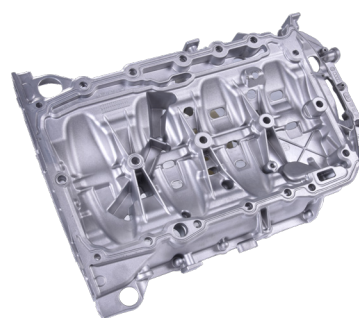
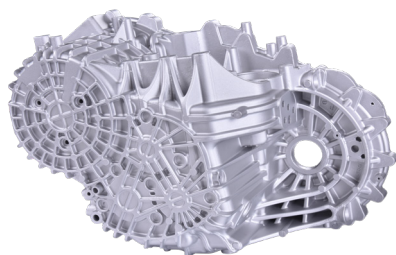
---



# 汽车零部件

## TRADITIONAL AUTO PARTS

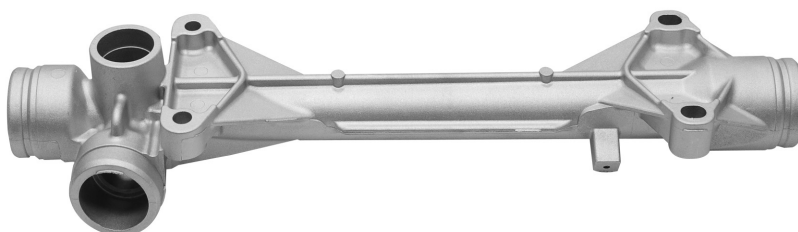
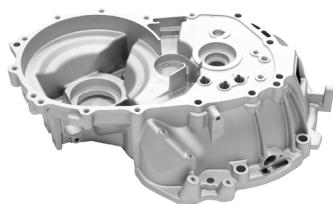
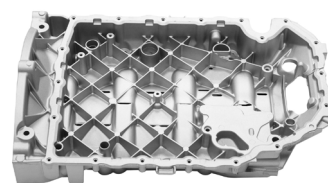
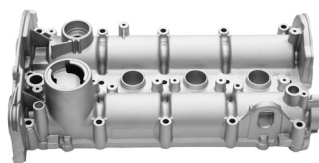
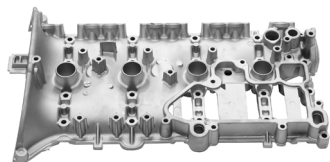
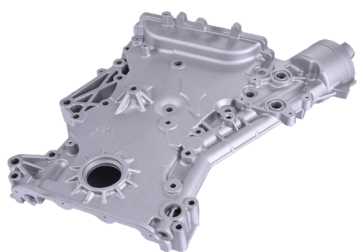
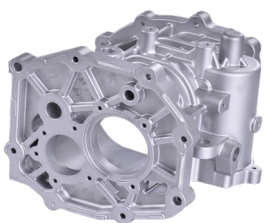
---



# 汽车零部件

## TRADITIONAL AUTO PARTS

---

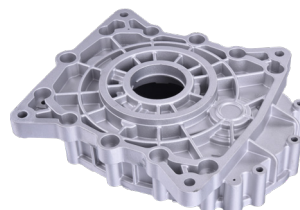
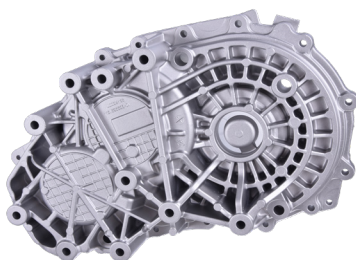
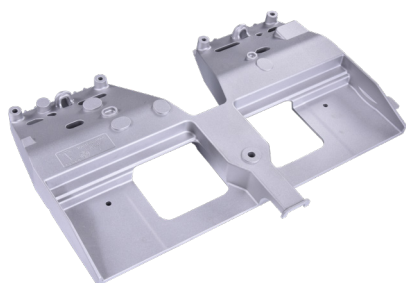
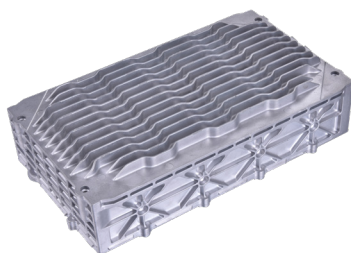




# 新能源车零部件

## NEW ENERGY VEHICLE PARTS

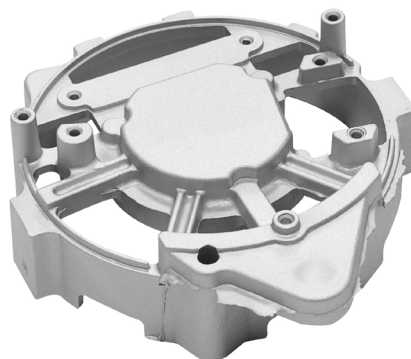
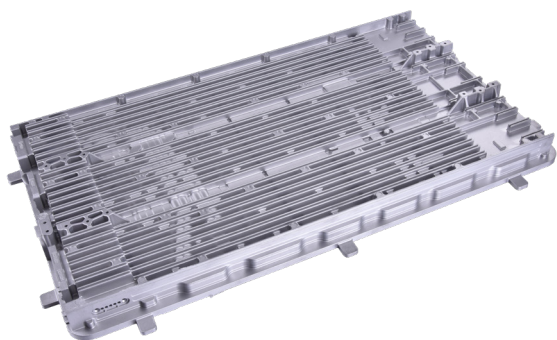
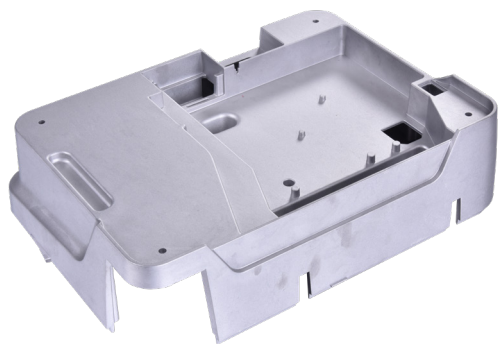
---



# 电子电器类和通讯件类

## ELECTRICAL AND COMMUNICATION EQUIPMENT COMPONENTS

---



# 合作伙伴

## COOPERATIVE PARTNER

我们是产业链诸多一级供应商及主机厂的长期合作伙伴与优质供应商：特斯拉、AITO、比亚迪、奇瑞、东风、中国一汽、一汽通用、北汽、长城、丰田、三菱电机、大众、奥迪、奔驰、保时捷、宝马

We are the long-term partner and quality supplier of many Tier1 suppliers and Oems in the industry chain: Tesla, AITO, BYD, CHERY, Dongfeng, China FAW, FAW General Motors, BAIC, Great Wall, Toyota, Mitsubishi Electric, Volkswagen, Audi, Mercedes-Benz, Porsche, BMW





# 客户成功与社会责任(ESG)

## CUSTOMER SUCCESS AND SOCIAL RESPONSIBILITY

---

### 致力于客户成功的服务体系

### Service System Dedicated to Customer Success

秉承“诚信 专注 创新 客户成功”的核心价值，万博丰的售后服务工程师团队能够帮助全球客户提供领先的技术支持。通过我们致力于客户成功的服务体系，不断追求卓越，并与客户共同实现业务增长和成功。我们始终将客户的利益和满意度放在首位，为其提供最佳的服务体验和价值。

Adhering to the core value of "Integrity, Focus, Innovation and Customer Success", WBF's team of after-sales service engineers are able to help our customers around the world to provide leading-edge technical support. Through our service system dedicated to customer success, we continuously pursue excellence and work with our customers to achieve business growth and success. We always put the interests and satisfaction of our customers in the first place to provide them with the best service experience and value.



## 绿色低碳制造

### Green Low-Carbon Manufacturing

万博丰不仅致力于制造高质量的压铸模具，更积极践行环境、社会和公司治理（ESG）原则。为了追求可持续的未来，我们在工厂的楼顶上布置了分布式光伏发电系统，为我们的生产过程注入清洁能源，通过借助光伏技术，我们全生产过程二氧化碳排放降低了 30%。除此之外，我们还积极推动节能减排措施。通过引入先进的生产技术和设备，我们不断提高能源利用效率，减少废弃物和污染物的产生。为深入实施绿色制造工程，加快建设绿色制造示范体系，推进制造业高质量发展，我们也通过优化生产流程，确保产品的制造过程和制造环境符合环境标准。我们也鼓励员工在个人生活中节约能源、降低碳足迹，共同守护我们共同的家园。

WBF are not only committed to manufacturing high quality die casting molds, but also actively practicing Environmental, Social and Corporate Governance (ESG) principles. In pursuit of a sustainable future, we have installed a distributed photovoltaic power generation system on the roof of our factory to inject clean energy into our production process, and through the use of photovoltaic technology, we have reduced carbon dioxide emissions by 30% throughout our production process. In addition, we are actively promoting energy saving and emission reduction measures. By introducing advanced production technologies and equipment, we continue to improve energy utilization efficiency and reduce waste and pollutants. To further implement the Green Manufacturing Project, accelerate the construction of the Green Manufacturing Demonstration System, and promote the high-quality development of the manufacturing industry, we also ensure that the manufacturing process and manufacturing environment of our products comply with environmental standards by optimizing the production process. We also encourage our employees to conserve energy and reduce carbon footprints in their personal lives to jointly guard our common home.





# 万博丰， 贡献企业的长期价值

WBF, Contribute to the long-term value of the business



## 地址

### ADD

浙江省宁波市北仑区璎珞河路 88 号

No.88, YingLuohe Road, Beilun District, Ningbo, Zhejiang, China.315806 Contacts

## 联系方式

### CONTACTS

Tel: +86-0574-86111372

Fax: +86-0574-86111350

E-mail: hhw@dqwc.com

## 网址

### WEB

[www.nbwbfc.com](http://www.nbwbfc.com)

